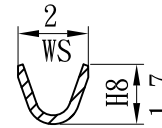
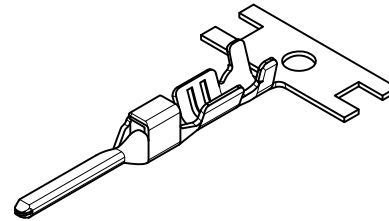
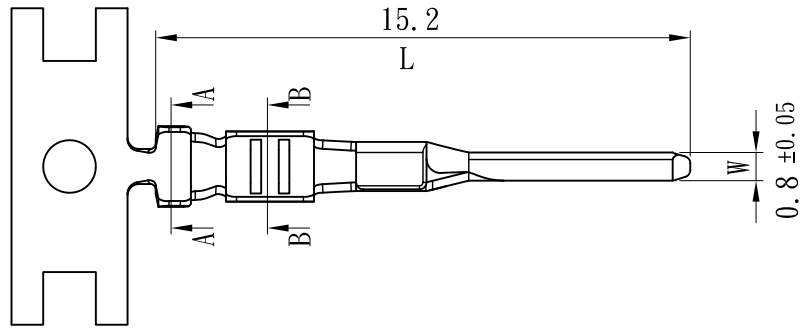


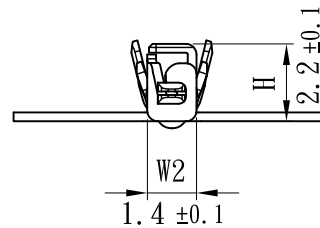
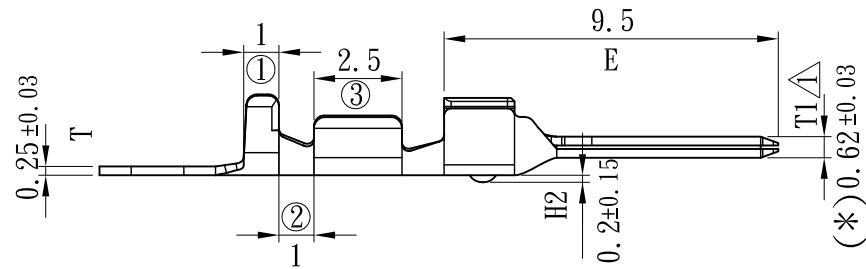
產品成品圖

Product Drawing

Terminal



B-B Section



A-A Section

表面處理(Surface treatment):
預鍍錫膜厚40 μ" 以上
(Pre-tin-plated thickness
more than 40 μ")

適用電線(Applicable wire):
UL1007 AWG# 22-26

線皮外徑(Insulation O.D.):
1.7-1.35 mm

配合端子(Mates with terminal):
D70008KS-2

配合塑膠(Mates with housing):
P4-D60008H-W

包裝數量(Standard packing):
8000 PCS

此產品須符合RoHS指令要求
(The product must conform to
the RoHS directive)

威力盛精工股份有限公司
WST WELI SHENG INDUSTRIAL CO., LTD.

UL NO:		CSA NO:		TUV NO:		名稱(Name): 產品規格(Product specifications)			核發單位 (Issued by)		制定單位 (Instituted by)				
						編號(Part No.): D60008PS-2			技術開發部 2016.1.6 核發		開發課 2016.1.5 制定				
						材質(Material): 磷青銅[Phosphor bronze]			單位(Unit):mm		比例(Scale):Free				
△ 變更特殊特性位置 Change the location of special characteristics		2		5-Jan-2016		核准 (Approved by)		審查 (Confirmed by)		制定 (Drawn by)		第三角法 (Projection):		一般公差 (General tolerance):	
正式發行 Official release		1		4-Jan-2016		高宏明		許世杰		黃莉雯		⊕		±0.3	
測試版1 test version 1		T-1		7-Jul-2015											
記號 (Sign)		變更內容 (Change description)		版次 (Edition)		制修訂日期 (Drawn date)									